



Aussie Camper Trailers & Outdoors

Cnr Milgate Dr & Sophie Crt Mornington Victoria 3931

www.aussiecampertrailers.com.au
info@aussiecampertrailers.com.au



Camper Range & Features

(03) 5976 3091

**WE ALSO DO LAY-BY
CONTACT US FOR DETAILS**

**Ask us about our low rate
Camper Trailer Finance**



AussieCamperTrailers.com.au

AUSSIE 'BASE'

from **\$4504***

7 X 4 Foot Australian built trailer
1500mm extended draw bar
14" Sunraysia wheels
All new wheels & tyres
6 leaf heavy duty spring suspension
Chrome Flush locks with sealed lockable tailgate
Drop down jacks
7' Tent. 14oz Rip Stop Canvas (annex not included)*
All tents fitted with heavy 600gsm floor
All tents fitted with 600gsm dust cover

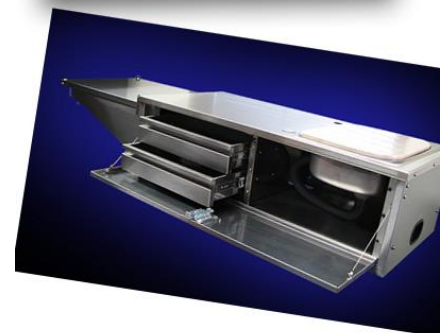
Tent Upgrade Options:

R7 (7' - 14oz ripstop)
H7 (7' - 450gsm)**
R9 (9' - 14oz RipStop)
HP9 (9' - 450gsm)***
R12 (12' - 14oz RipStop)
HP12 (12' - 450gsm)***
HP12TR (12' - 450gsm)****
Registration & on roads

** - the H7 tents are constructed of 450gsm heavy duty canvas

*** - the HP9 & HP12 have a pitched roof in the bedroom area giving extra head height & are constructed of 450gsm heavy duty canvas

****-the HP12TR has a built in tropical roof over the main tent area



AussieCamperTrailers.com.au

AUSSIE 'ALPINE'

from **\$5277**

7 X 4 Foot Australian built trailer
1700mm extended draw bar
14" Sunraysia wheels
All new wheels & tyres including spare
6 leaf heavy duty spring suspension
Heavy duty frame with gas struts
Chrome Flush locks with sealed lockable tailgate
Jerry can & gas bottle holders
Drop down jacks
4 x Trailer tie down points
Lockable sealed Tailgate
7' Tent with annex* 14oz Rip Stop Canvas
All tents fitted with heavy 600gsm floor
All tents fitted with 600gsm dust cover

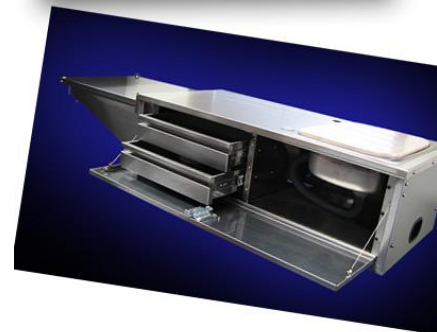
Tent Upgrade Options:

H7 (7' - 450gsm)**
R9 (9' - 14oz RipStop)
HP9 (9' - 450gsm)***
R12 (12' - 14oz RipStop)
HP12 (12' - 450gsm)***
HP12TR (12' - 450gsm)****
Registration & on roads

** - the H7 tents are constructed of 450gsm heavy duty canvas

*** - the HP9 & HP12 have a pitched roof in the bedroom area giving extra head height & are constructed of 450gsm heavy duty canvas with skylights over the bed

****-the HP12TR has a built in tropical roof over the main tent area



AussieCamperTrailers.com.au

AUSSIE 'ALPINE DX'

from **\$5957***

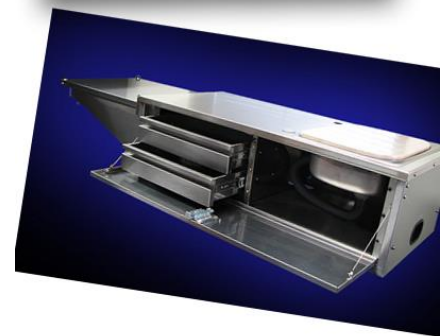
7 X 4 Foot Australian built trailer
1700mm extended draw bar
14" Sunraysia wheels
All new wheels & tyres including spare
6 leaf heavy duty spring suspension
Heavy duty frame with gas struts
Integrated storage box
Chrome Flush locks with sealed lockable tailgate
Jerry can & gas bottle holders + extra
Drop down jacks
Bike sleeve with hitch pin
4 x Trailer tie down points
7' Tent with annex 14oz Rip Stop Canvas*
All tents fitted with heavy 600gsm floor
All tents fitted with 600gsm dust cover

Tent Upgrade Options:

H7 (7' - 450gsm)**
R9 (9' - 14oz RipStop)
HP9 (9' - 450gsm)***
R12 (12' - 14oz RipStop)
HP12 (12' - 450gsm)**
HP12TR (12' - 450gsm)****

Registration & on roads

- ** - the H7 tents are constructed of 450gsm heavy duty canvas
- *** - the HP9 & HP12 have a pitched roof in the bedroom area giving extra head height & are constructed of 450gsm heavy duty canvas with skylights over the bed
- ****-the HP12TR has a built in tropical roof over the main tent area

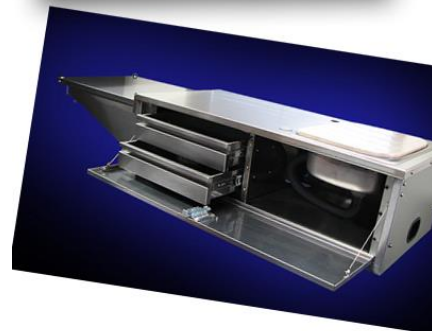


AussieCamperTrailers.com.au

AUSSIE 'NEPEAN'

from **\$6770***

7 X 4 Foot Australian built trailer
1700mm extended draw bar
15" Sunraysia wheels (Landcruiser stud pattern)
All new wheels & tyres including spare
6 leaf heavy duty spring suspension
Brakes – Either electric or over ride
Tailgate mounted folding prep bench
Water tank with ext water pump
Stone guard
Heavy duty frame with gas struts
Integrated storage box
Jerry can & gas bottle holders – 2 of each
Drop down jacks
4 x Trailer tie down points
Chrome flush locks with sealed lockable tailgate
Bike sleeve
Fully sealed trailer
7' Tent with annex* 14oz Rip Stop Canvas
All tents fitted with heavy 600gsm floor
All tents fitted with 600gsm dust cover



AussieCamperTrailers.com.au

AUSSIE 'NEPEAN'

from **\$6770***

Tent Upgrade Options:

H7 (7' - 450gsm)**

R9 (9' - 14oz RipStop)

HP9 (9' - 450gsm)***

R12 (12' - 14oz RipStop)

HP12 (12' - 450gsm)***

HP12TR (12' - 450gsm)****

Registration & on roads

** - the H7 tents are constructed of 450gsm heavy duty canvas

*** - the HP9 & HP12 have a pitched roof in the bedroom area giving extra head height & are constructed of 450gsm heavy duty canvas with skylights over the bed

****-the HP12TR has a built in tropical roof over the main tent area



AussieCamperTrailers.com.au

AUSSIE 'FLINDERS'

from **\$7922**

7 X 4 Foot Australian Built Trailer
100x50x1700 heavy duty extended draw bar
Off road coupling
Brakes – Either electric or over ride
Tailgate mounted kitchen – with pump
Water tank with fitted bash plate
Stone guard
15" Sunraysia wheels (Landcruiser stud pattern)
All new off road wheels & tyres including spare
45mm solid square axle
Off road shackle suspension
Heavy duty frame with gas struts
Integrated lockable toolbox
Drop down jacks
Chrome flush locks with sealed lockable tailgate
Jerry can & gas bottle holders (2 of each)
6 x Trailer tie down points
Bike sleeve with hitch pin
Fully Sealed Trailer
7' Tent with annex*. 14oz Rip Stop Canvas
All tents fitted with heavy 600gsm floor
All tents fitted with 600gsm dust cover



AussieCamperTrailers.com.au

AUSSIE 'FLINDERS'

from **\$7922***

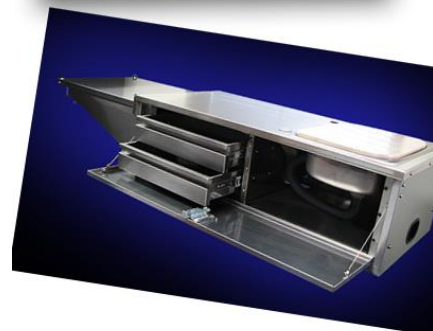
Tent Upgrade Options:

H7 (7' - 450gsm)**
R9 (9' - 14oz RipStop)
HP9 (9' - 450gsm)***
R12 (12' - 14oz RipStop)
HP12 (12' - 450gsm)**
HP12TR (12' - 450gsm)***
Registration & on roads

** - the H7 tents are constructed of 450gsm heavy duty canvas

*** - the HP9 & HP12 have a pitched roof in the bedroom area giving extra head height & are constructed of 450gsm heavy duty canvas with skylights over the bed

****-the HP12TR has a built in tropical roof over the main tent area



AussieCamperTrailers.com.au

AUSSIE 'TRANSPORTER'

from **\$10,120***

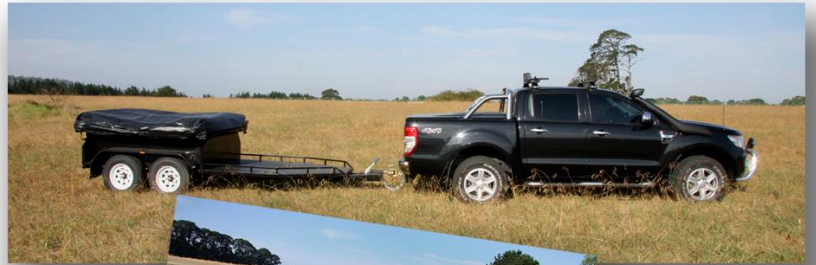
7'6" X 4 Foot Australian Built
7' Motor Bike Platform
100x50 heavy draw bar
Dual axle suspension
15" Sunraysia wheels (Landcruiser stud pattern)
All new wheels & tyres including spare
6 leaf heavy duty rocker roller suspension
40mm solid square axles –
Electric or over-ride brake system
Heavy duty frame with gas struts
Drop down jacks
Lockable tailgate
6 x Trailer tie down points
Bike sleeve with hitch pin
Flush locks - Sealed tailgate
Fully Sealed Trailer
7' Tent with annex*. 14oz Rip Stop Canvas
All tents fitted with heavy 600gsm floor
All tents fitted with 600gsm dust cover



AussieCamperTrailers.com.au

AUSSIE 'TRANSPORTER'

from **\$10,120***



Transporter Tent Upgrade Options:

H7 (7' - 450gsm)**
R9 (9' - 14oz RipStop)
HP9 (9' - 450gsm)***
R12 (12' - 14oz RipStop)
HP12 (12' - 450gsm)***
HP12TR (12' - 450gsm)***
Registration & on roads

** - the H7 tents are constructed of 450gsm heavy duty canvas

*** - the HP9 & HP12 have a pitched roof in the bedroom area giving extra head height & are constructed of 450gsm heavy duty canvas with skylights over the bed

****-the HP12TR has a built in tropical roof over the main tent area



AussieCamperTrailers.com.au

AUSSIE 'OUTBACK TREKKER'

now **\$16,100**



The Trekker is our new forward fold hard floor camper trailer with all the mod-cons for you to tour outback Australia with all of the creature comforts of home. The Aussie Outback Trekker comes standard with many options not found in other camper trailers.

- Forward Fold Tent
- Fully Galvanised Chassis
- 100x50x4mm Galvanised Draw Bar
- Independent Coil suspension
- Twin Shock Absorbers
- Fully Stainless Steel Kitchen
- 4 Burner Gas Stove
- 150 Litre Stainless Steel Water Tank
- 360 Deg Quick Release Coupling
-



AUSSIE 'OUTBACK TREKKER'

now **\$16,100**

- Full Annexe (Including Walls & Floor)
- Tropical Roof Over Tent
- 360 Deg Quick Release Coupling
- Slide Out Fridge Drawer
- Internal Carpet In Tool Box
- LED Lights In Tool Box
- 16" Alloy Wheels (inc Spare)
- Cooper Off Road Tyres
- 12" Electric Brakes
- 105AH Deep Cycle Battery
- LED Lighting In Living Room
- LED Lighting In Kitchen
- 10" Swing Up Jockey Wheel
- 4 x Lockable Stabilizer Legs
- 2 x 20 Litre Jerry Can Holders
- 2 x 9kg Gas Rings
- Stone Guard
- 2 x 1200N Winches (Front & Back)
- Quick Release Alloy Tent Poles
- Radio / CD Player
- Inner Spring Mattress
- External Shower
- Stand Alone Shower Tent
- Hot Water Provision (Shower & Kitchen)



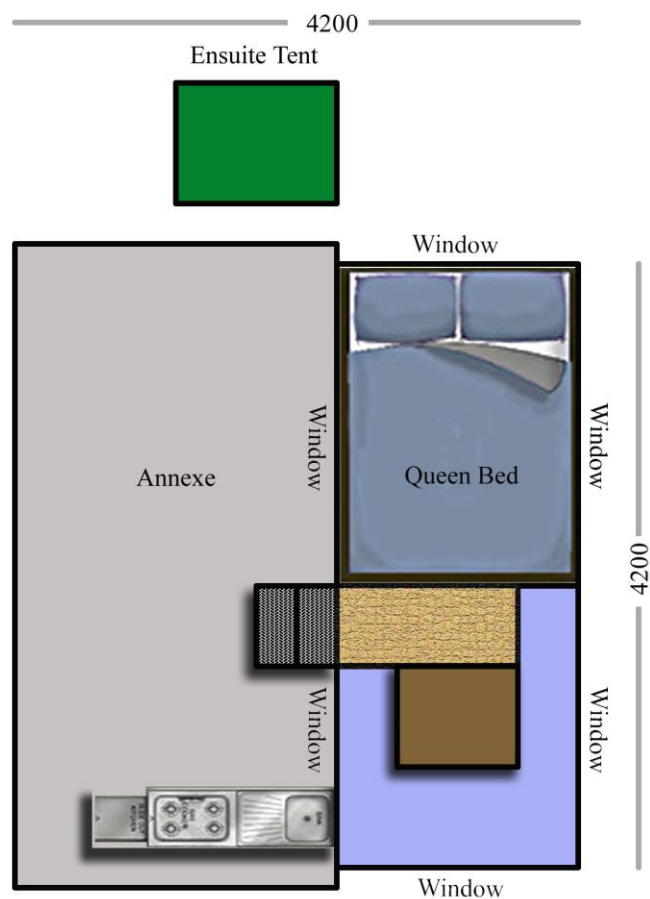
AussieCamperTrailers.com.au

AUSSIE 'OUTBACK TREKKER'

now **\$16,100**



Aussie Outback Trekker



AUSSIE 'OUTBACK ENDURANCE'

now **\$17,550**



The Endurance is our new forward fold / rear bed slidehard floor camper trailer with all the mod-cons for you to tour outback Australia with the entire family, also with all of the creature comforts of home.

The Aussie Outback Endurance comes standard with many options not found in other camper trailers.

Forward Fold Tent

- Forward Fold Tent
- Rear Slide Bedroom
- Fully Galvanised Chassis
- 100x50x4mm Galvanised Draw Bar
- Independent Coil suspension
- Twin Shock Absorbers
- Fully Stainless Steel Kitchen
- 4 Burner Gas Stove
- 150 Litre Stainless Steel Water Tank

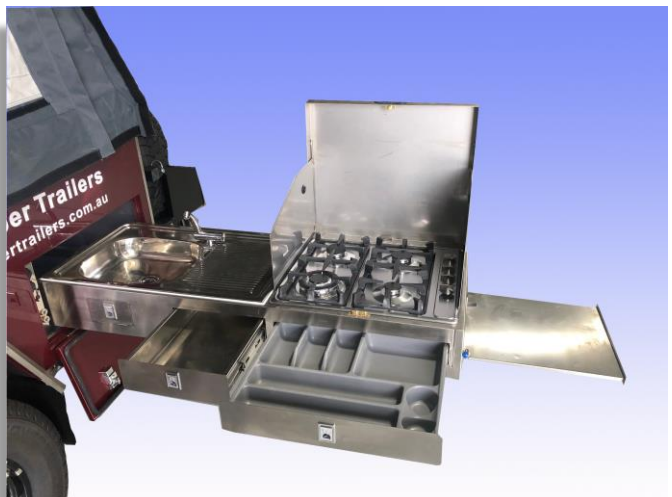


AussieCamperTrailers.com.au

AUSSIE 'OUTBACK ENDURANCE'

now **\$17,550**

- 360 Deg Quick Release Coupling
- Full Annexe (Including Walls & Floor)
- Tropical Roof
- Slide Out Fridge Drawer
- Double Pull Out Removable Drawers
- LED Lights In Tool Box
- 16" Alloy Wheels (inc 2 x Spare)
- Cooper Off Road Tyres
- 12" Electric Brakes
- 105AH Deep Cycle Battery
- LED Lighting In Living Room
- LED Lighting In Kitchen
- 10" Swing Up Jockey Wheel
- 4 x Lockable Stabilizer Legs
- 2 x 20 Litre Jerry Can Holders
- 2 x 9kg Gas Rings
- Stone Guard
- 2 x 1200N Winches (Front & Back)
- Quick Release Alloy Tent Poles
- Radio / CD Player
- Inner Spring Mattress
- External Shower
- Shower Room
- Hotwater Provision (shower & kitchen)

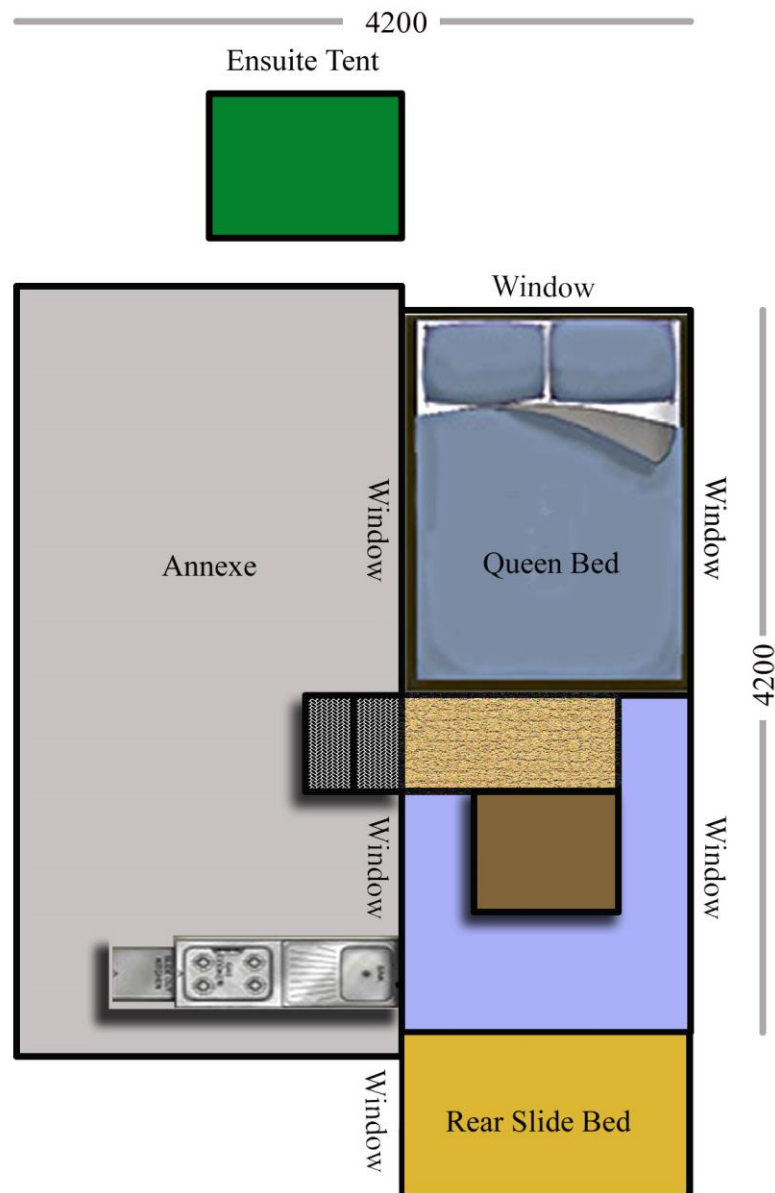


AussieCamperTrailers.com.au

AUSSIE 'OUTBACK ENDURANCE'

now **\$17,550**

Aussie Outback Endurance



AussieCamperTrailers.com.au

CAMPER TRAILER OPTIONAL EXTRAS

Battery Box 12Volt – Mounted	\$ 151
Battery Box (Stand Alone)	\$ 98
Bike sleeve	\$ 113
Boat Rack	\$ 571
Boat Rack (Outback Trekker)	\$ 577
Brakes - Electric	\$ 580
Brakes – Mechanical	\$ 580
Coupling – Off road	\$ 229
Coupling – Off road – Braked	\$ 229
Coupling - Off road – Alko	\$ 473
Draw bar – Extended (75mm x 50mm)	\$ 63
Draw bar – Extended (100mm x 50mm)	\$ 214
Dual Battery System (Outback Trekker Only)	\$ 368
Frame with gas struts (heavy duty with 3 hinges)	\$ 415
Gas bottle ring (additional)	\$ 57
Jerry can holder (additional)	\$ 44
Kitchen – Stainless Steel*	\$ 890
Kitchen – Drifta	refer drifta.com.au (website)
Motor Bike C Channel	\$69
Powder coating	\$ 882
Storage box (integrated & lockable)	\$ 617
Suspension - Eye to eye	\$ 132
Suspension – Off road eye to eye	\$ 228
Suspension - Heavy duty off road shackle	\$ 706
Tailgate shelf (fold down)	\$ 220
Tailgate shelf (fold down – stainless steel)	\$ 326
Tie down points – extra	\$ 10
Upright Spare Wheel Holder	\$ 139
Water Tank & Pump – (60 litre)	\$ 470
Wheels – 14" Alloy (extra)	\$75ea
Wheels – 15" Landcruiser Alloy (extra)	\$92ea
Wheels – 15" Landcruiser Black Sunraysia (extra)	\$36ea
Wheels – 14" to 15" Offroad (x3)	\$ 600

Additional sunroom / annex

Additional front sunroom	\$ 439
Additional front annex	\$ 531



Tent Extras

Tent and annex roof spreader bars	\$ 26.00ea
Guy rope spring	\$ 4.00ea

Tent Only

12' tent with annex	R12	(14oz ripstop)	\$3277
12' tent with annex	HP12	(450gsm canvas)	\$3810
12'Tent with annex	HPT12	(450gsm canvas)	\$3962
With tropical roof			
9' tent with annex	R9	(14 oz ripstop)	\$3216
9' tent with annex	HP9	(450gsm canvas)	\$3707
7' tent with annex	R7	(14 oz ripstop)	\$2958
7' tent with annex	HP7	(450 gsm)	\$3354
12' Tent Rear Room		(14oz ripstop)	\$721
12' Tent Rear Room		(450gsm canvas)	\$862

* kitchens fitted do not include water tank

TRAILER SPECIFICATIONS

- All trailers are 7' x 4' and fully constructed in Australia using Australian steel.
- Trailer chassis is constructed of 50x50x2.3 box tube.
- Draw Bars are 1700mm in length and constructed from 75x50x3.2 RHS. (Base trailer – 1500mm)
- All trailers panels are zinc anneal to help prevent rust and are fully seamed to reduce dust and moisture impregnation.

* Aussie Base campers come standard with 7' tent only. For add on annex - \$300.00. All other tents come standard with annex included

** Our tents are made of durable 400gsm fine weave and 450gsm heavy duty canvas and include the following extras as standard



- ***PVC mattress weather protection***
- ***Velcro detachable annex floor***
- ***3 piece detachable annex walls***
- ***100mm tent floor water protection risers***
- ***Heavy duty PVC transport dust covers***
- ***Provision for extra sunroom or annex***
- ***Tents fully removable***
- ***Dustcover skirt fully removable***

When shopping around for your camper trailer, go to our 'FAQ' section on our website, where you will find a guide of what to look for when looking for your camper trailer

We now stock Drifta kitchens and accessories.



What I Need To Look For When Purchasing a Camper Trailer

Many people come to us and their questions are varied and wide ranging. However, there are certain things to look for when purchasing your camper trailer.

Firstly, make sure your trailer is Australian made. This is very important. There are some sellers in the marketplace who will tell you that their trailers are made here in Australia when in fact they are imported. They may only be assembled here in Australia. If you cannot see the trailers being built at the outlet you attend, then odds on they will be trailers that are being imported from overseas. Be careful if you hear the story... ' we build our trailers in our other factory. That factory is likely to be some 3000kms away. You only need to Google 'Chinese imported camper trailers' to realise the quality and the welding in the imported trailer.

If any components such as jockey wheels, gas bottle rings or jerry can holders are either pop riveted or bolted on, then it is more than likely that the trailer has been imported. No matter what you are told.



AussieCamperTrailers.com.au

Another way of ascertaining whether the trailers are Australian built is to ask the seller if you could have the draw bar extended. This is a very simple exercise and should not cost much more than \$50.00. If the seller tells you that they cannot extend the draw bar, then it would be fair to assume that the seller is importing the trailer

Ask if the trailer is constructed of zinc anneal. This material is more expensive, however it more weather resistant than normal 'black' steel, and is not prone to rust as normal steel.

Check the trailer and make sure all the seams are sealed. If the seams are all sealed, this will help prevent water and dirt getting into your trailer, and in turn prevent rust

Is the trailer fitted with LED lights?

If you are planning on purchasing a trailer with a frame and gas struts, make sure the struts are welded to an independent frame and not welded or pop riveted to the steel bed base. It will only take a short period of time for struts welded or pop riveted to the bed base to warp. We use a 50mm x 25mm RHS frame which we then weld the tent.

Check the draw bar and make sure it goes back almost to the axle. The draw bar should be at least 75mm x 50mm x 3.2mm. Some manufacturers will use either 2mm or 2.5mm RHS or similar.

Some Chinese trailers will come standard with electric brakes. This is ok if you have the brake controller fitted to your vehicle. If you don't, you will need to have one installed at an additional cost of approximately \$600.00.

If you don't have the brake controller fitted, and you have electric brakes fitted to your camper trailer, then the electric brakes will not work at all.

Our Nepean range of camper trailers come standard with either electric or over-ride brakes. Your choice.

Have a look under your trailer and check for the following:-

Make sure it has been painted all over.

Check the axle, make sure it is a solid square and not either hollow or round. We use a minimum of 40mm solid square axles. Check the welding.

Check the size of the chassis. It should be at least 50mm sq. (Our sub frames are constructed of 50mm sq tube. Some manufacturers will use 40mm or less.

Check how many ribs or stringers are fitted under the trailer. There should be at least 4. We use a minimum of 40mm sq tube. You will find some other manufacturers may use angle or similar.

Some sellers will also tell you that their tents are made in Australia when in fact they are not. Question the retailer where the tent is made. Here again, if they tell you that they



are making the tents themselves, then one would expect to see people working and sewing the canvas at the factory. If there is no evidence of this, then the tents will be imported. However, do not be concerned if the seller tells you that his tents are imported. Imported tents can be of very high quality, so if the seller tells you this, do not be concerned. You may find some sellers will state that they send the canvas or cotton to China where it is prepared and sewn. Then shipped back to Australia. This will be false.

Ask the seller what weight the tent material is. If you are told that it is 15oz Rip Stop canvas (or higher), they are not telling you the truth. There is no such material. The heaviest Rip Stop canvas on the market at present is 14oz.

Check the stitching on the tents (where the pegs secure the tent to the ground). Make sure the tent is not stitched up the wall of the tent. If so, the stitching can pull and ultimately leak in heavy weather.

Check that the tent and dust cover are secured to the trailer by means of an aluminium track. (Similar to the track fitted to the side of a caravan for annexes). The advantage of the alloy track is that should you ever damage the tent or dust cover, the tent / dust cover can be easily removed for repair. If the tent and / or dust cover is screwed to the bed base, then you will have major issues should you ever need to remove the item from your trailer.

Check that the front of the tent is fitted with pole socks (this is where the annex roof poles fit into the main tent). The sock looks like a small sleeve that surrounds the annex roof pole with a draw string on it. If your tent is not fitted with pole socks then you will have the issue of insects etc. coming through the hole should you have lights on inside the tent.

Check that your annex is secured to the tent by both zipper and velcro. This is stronger than either velcro, or zipper alone. The walls of your annex should also be velcro and zipper for extra strength

Your tent will be secured to the ground by several pegs. The ideal fitting to the tent is a 'D' ring. Avoid purchasing any tent that has a flap sewn vertically along the bottom edge at the corner of your tent. The issue with flaps is that problems arise when the tent is pulled taught. This in turn will pull the stitching along the seam of the tent and in turn rip or allow water to get into the corner of your tent when it rains.

Make sure that the tent floor material is 600gsm. Some suppliers will use 450gsm or lighter. The issue with the lighter weight material is that it is prone to tearing or developing holes if set up on rocky ground.



January 2020

Also make sure that the dust cover is also 600gsm. This is the heaviest material presently on the market, and is the optimum material for the cover protecting your tent whilst travelling.

IF YOU HAVE ANY OTHER QUERIES WHEN LOOKING - FEEL FREE TO CONTACT US ANYTIME. WE ARE MORE THAN HAPPY TO ASSIST YOU



Aussie Camper Trailers & Outdoors
Cnr Milgate Dr & Sophie Crt
MORNINGTON 3931

phone 03 5976 3091
info@aussiecampertrailers.com.au